

TABLE A – TAPER LENGTHS								
Taper Types (m)	Regulatory Speed Limit before Work Begins (km/h)							
	≤ 50	60	70	80	90	100	110	120
Merge Taper Length	35	55	160	190	210	230	250	280
Lane Shift Taper Length	30	50	80	100	110	120	130	140
Downstream Taper Length	30	30	30	30	30	30	30	30
TCP, Signal, and Shoulder Taper Length (min. 5 devices)	5	8	15	15	15	15	15	15
Minimum Tangent Length between Tapers	30	60	160	190	210	230	250	280
Run-in Length on Centreline	40	50	60	60	70	80	90	100

TABLE B – DEVICE SPACING LENGTHS								
Device Spacing (m)	Regulatory Speed Limit before Work Begins (km/h)							
	≤ 50	60	70	80	90	100	110	120
Construction Sign Spacing	A	40	60	80	100	150	200	200
Buffer Space	B	30	40	60	80	110	140	200
Channelizing Device Spacing for Tapers	C	10	10	15	15	15	15	15
Channelizing Device Spacing on Curves and Tangents	D	10	10	30	30	40	40	50

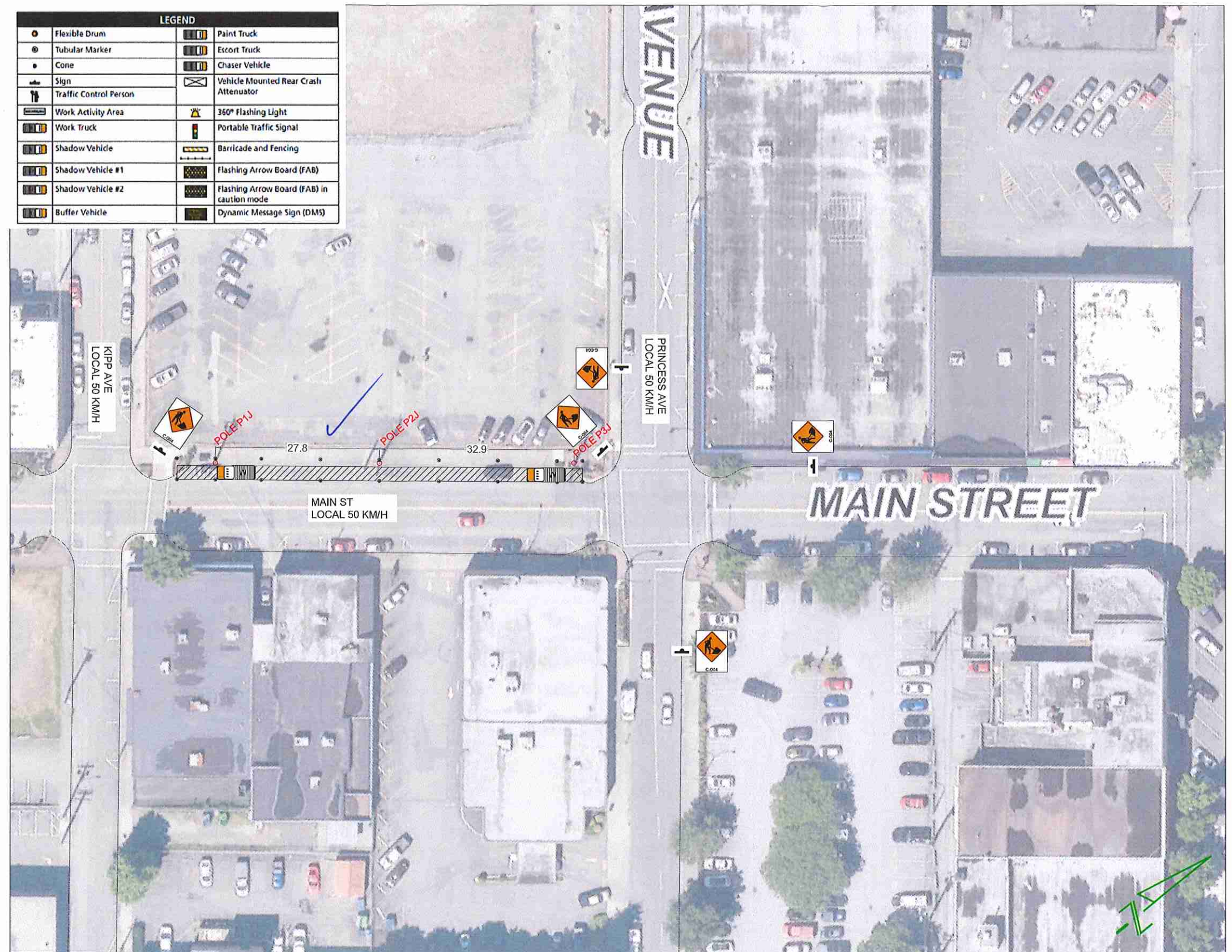
NOTES:

1. THE WORK REQUIRING THE TRAFFIC CONTROL MEASURE INVOLVES THE INSTALLATION OF A FIBER OPTIC ENTRANCE CABLE FROM MH-203 TO 9296 MAIN STREET VIA MH-204, POLES P1J, P2J AND P3J - THIS SECTION IS FOR THE AERIAL PLACING OF FIBER OPTIC CABLE FROM POLES P1J TO P3J. THIS LAYOUT WILL REMAIN IN EFFECT UNTIL THE WORKS ARE COMPLETED.
2. LANE CLOSURES ARE AS NOTED IN THIS LAYOUT.
3. TIMING OF THE WORKS WILL BE FROM 8:30AM TO 4:30 PM.
4. LOCATION OF THE WORK ZONE IS AS INDICATED ON THIS PLAN FOR CONSTRUCTION.
5. THE MEASURES SHOWN IN THIS TRAFFIC MANAGEMENT PLAN IS IN ACCORDANCE TO THE "BC TRAFFIC MANAGEMENT MANUAL FOR WORK ON ROADWAYS (2015 INTERIM)". CHANGES TO THIS LAYOUT MAY BE MADE BY THE TRAFFIC CONTROL PERSON IN CHARGE TO REFLECT FIELD CONDITIONS.
6. PRIORITY ACCESS WILL BE GIVEN TO EMERGENCY VEHICLES.
7. ALL DIMENSIONS ARE IN METRES.

CONTACT INFORMATION:

SHANE BELFRY:
778-870-9562

LEGEND			
○	Flexible Drum	▬	Paint Truck
⊙	Tubular Marker	▬	Escort Truck
●	Cone	▬	Chaser Vehicle
⊠	Sign	▬	Vehicle Mounted Rear Crash Attenuator
⊠	Traffic Control Person	⚡	360° Flashing Light
▬	Work Activity Area	⚡	Portable Traffic Signal
▬	Work Truck	▬	Barricade and Fencing
▬	Shadow Vehicle	▬	Flashing Arrow Board (FAB)
▬	Shadow Vehicle #1	▬	Flashing Arrow Board (FAB) in caution mode
▬	Shadow Vehicle #2	▬	Dynamic Message Sign (DMS)
▬	Buffer Vehicle		



BC ONE CALL

CALL BEFORE YOU DIG
1 800-474-6886
VANCOUVER AREA
604-257-1940



CONSTRUCTION	PERMIT	DESIGN: DM	DR: DM
REV. DESCRIPTION:	SUBMITTED DATE:	604-529-1842	SCALE: NTS
REV. DESCRIPTION:	RE-SUB DATE:		DATE: 01/03/2018
REV. DESCRIPTION:	RE-SUB DATE:	ASSOCIATED DRAWINGS	
REV. DESCRIPTION:	APPROVED:	1.	
REV. DESCRIPTION:	DATE:	2.	
REV. DESCRIPTION:	AS CONSTRUCTED DATE:	3.	
REV. DESCRIPTION:	CONTRACTOR:	REF:	

THE WORKS PROPOSED ON THIS DRAWING SHALL AT ALL TIMES REMAIN THE PROPERTY OF TELUS

PROPOSED TRAFFIC CONTROL LAYOUT
TO ACCOMMODATE TELECOM
AERIAL CABLE PLACING

9200 BLOCK MAIN STREET
CHILLIWACK, BC

SYSTEM NAME:
2880993 TTCP

SHEET 2



Taper Types (m)	Regulatory Speed Limit before Work Begins (km/h)							
	≤ 50	60	70	80	90	100	110	120
Merge Taper Length	35	55	160	190	210	230	250	280
Lane Shift Taper Length	30	50	80	100	110	120	130	140
Downstream Taper Length	30	30	30	30	30	30	30	30
TCP, Signal, and Shoulder Taper Length (min. 5 devices)	5	8	15	15	15	15	15	15
Minimum Tangent Length between Tapers	30	60	160	190	210	230	250	280
Run-in Length on Centreline	40	50	60	70	80	90	100	

Device Spacing (m)	Regulatory Speed Limit before Work Begins (km/h)							
	≤ 50	60	70	80	90	100	110	120
Construction Sign Spacing	A	40	60	80	100	150	200	200
Buffer Space	B	30	40	60	80	110	140	200
Channelizing Device Spacing for Tapers	C	10	10	15	15	15	15	15
Channelizing Device Spacing on Curves and Tangents	D	10	10	30	30	40	40	50

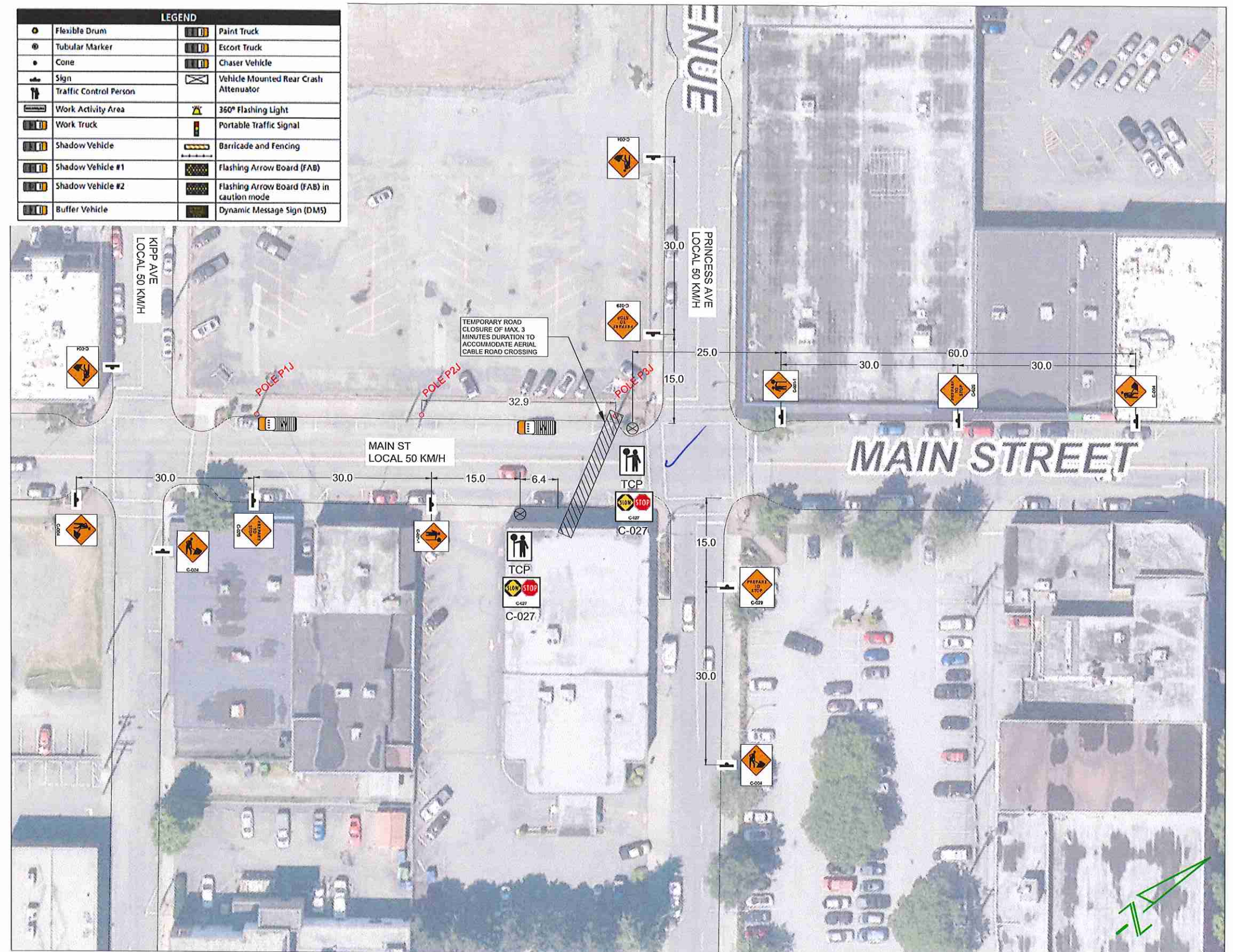
NOTES:

1. THE WORK REQUIRING THE TRAFFIC CONTROL MEASURE INVOLVES THE INSTALLATION OF A FIBER OPTIC ENTRANCE CABLE FROM MH-203 TO 9296 MAIN STREET VIA MH-204, POLES P1J, P2J AND P3J - THIS SECTION INVOLVES THE AERIAL CROSSING OF MAIN STREET TO 9296 MAIN STREET. THIS LAYOUT WILL REMAIN IN EFFECT UNTIL THE WORKS ARE COMPLETED.
2. A TEMPORARY ROAD CLOSURE OF A MAXIMUM DURATION OF 3 MINUTES IS REQUIRED TO ALLOW THE ROAD CROSSING OF MAIN ST BY THE PROPOSED CABLE IN THIS LAYOUT.
3. TIMING OF THE WORKS WILL BE FROM 8:30AM TO 4:30 PM.
4. LOCATION OF THE WORK ZONE IS AS INDICATED ON THIS PLAN FOR CONSTRUCTION.
5. THE MEASURES SHOWN IN THIS TRAFFIC MANAGEMENT PLAN IS IN ACCORDANCE TO THE "BC TRAFFIC MANAGEMENT MANUAL FOR WORK ON ROADWAYS (2015 INTERIM)". CHANGES TO THIS LAYOUT MAY BE MADE BY THE TRAFFIC CONTROL PERSON IN CHARGE TO REFLECT FIELD CONDITIONS.
6. PRIORITY ACCESS WILL BE GIVEN TO EMERGENCY VEHICLES.
7. ALL DIMENSIONS ARE IN METRES.

CONTACT INFORMATION:

SHANE BELFRY:
778-870-9562

○ Flexible Drum	■ Paint Truck
⊙ Tubular Marker	■ Escort Truck
● Cone	■ Chaser Vehicle
⊠ Sign	■ Vehicle Mounted Rear Crash Attenuator
⊠ Traffic Control Person	⚡ 360° Flashing Light
⊠ Work Activity Area	⚡ Portable Traffic Signal
⊠ Work Truck	■ Barricade and Fencing
⊠ Shadow Vehicle	⚡ Flashing Arrow Board (FAB)
⊠ Shadow Vehicle #1	⚡ Flashing Arrow Board (FAB) in caution mode
⊠ Shadow Vehicle #2	⚡ Dynamic Message Sign (DMS)
⊠ Buffer Vehicle	



BC ONE CALL

CALL BEFORE YOU DIG
1 800-474-6886
VANCOUVER AREA
604-257-1940



CONSTRUCTION	PERMIT
REV. DESCRIPTION:	SUBMITTED DATE:
REV. DESCRIPTION:	RE-SUB DATE:
REV. DESCRIPTION:	RE-SUB DATE:
REV. DESCRIPTION:	APPROVED:
REV. DESCRIPTION:	DATE:
REV. DESCRIPTION:	AS CONSTRUCTED DATE:
REV. DESCRIPTION:	CONTRACTOR:

DESIGN: DM	DR: DM
604-529-1842	SCALE: NTS
	DATE: 01/03/2018

ASSOCIATED DRAWINGS
1.
2.
3.
REF:

THE WORKS PROPOSED ON THIS DRAWING SHALL AT ALL TIMES REMAIN THE PROPERTY OF TELUS
PROPOSED TRAFFIC CONTROL LAYOUT TO ACCOMMODATE TELECOM AERIAL CABLE PLACING
9296 MAIN STREET CHILLIWACK, BC
SYSTEM NAME: 2680993 TTCP
SHEET 3

